

Bis(tetraphenylphosphonium) tris[*N*-(methylsulfonyl)dithiocarbimato(2-)- κ^2 S,S']stannate(IV)

João P. Barolli,^a Marcelo R. L. Oliveira,^a Rodrigo S. Corrêa^{b*} and Javier Ellena^b

^aDepartamento de Química, UFV, 36570-000 Viçosa, MG, Brazil, and ^bInstituto de Física de São Carlos, Universidade de São Paulo, 13560-970, São Carlos, SP, Brazil
Correspondence e-mail: rodrigoecorrea@ursa.ifsc.usp.br

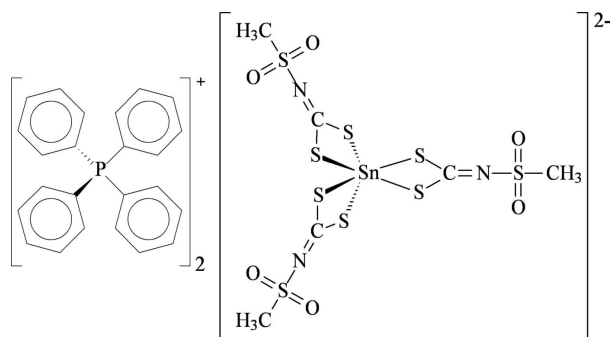
Received 1 July 2009; accepted 25 August 2009

Key indicators: single-crystal X-ray study; *T* = 298 K; mean σ (C–C) = 0.008 Å; disorder in main residue; *R* factor = 0.068; *wR* factor = 0.138; data-to-parameter ratio = 13.9.

In the title complex, (C₂₄H₂₀P)₂[Sn(C₂H₃NO₂S₃)₃], the Sn^{IV} atom is coordinated by three *N*-(methylsulfonyl)dithiocarbamate bidentate ligands through the anionic S atoms in a slightly distorted octahedral coordination geometry. There is one half-molecule in the asymmetric unit; the complex is located on a crystallographic twofold rotation axis passing through the cation and bisecting one of the (non-symmetric) ligands, which appears thus disordered over two sites of equal occupancy. In the crystal structure, weak intermolecular C–H...O and C–H...S interactions contribute to the packing stabilization.

Related literature

For general background to tin(IV) dithiocarbamates, see: Barone *et al.* (2002); Coucouvanis (1979); Heard (2005); Menezes *et al.* (2005); Seth *et al.* (1992). For related structures of transition metal (Ni, Pt and Zn) complexes with dithiocarbamates derived from sulfonamides, see: Alves *et al.* (2009); Amim *et al.* (2008); Franca *et al.* (2006); Menezes *et al.* (2005). For the ligand synthesis, see: Hartke (1966).



Experimental

Crystal data

(C₂₄H₂₀P)₂[Sn(C₂H₃NO₂S₃)₃]
M_r = 1305.13
 Monoclinic, *C*2/*c*
a = 18.5563 (3) Å
b = 13.6096 (2) Å
c = 23.3203 (3) Å
 β = 91.355 (1)°

V = 5887.75 (15) Å³
Z = 4
 Mo *K*α radiation
 μ = 0.86 mm⁻¹
T = 298 K
 0.40 × 0.11 × 0.07 mm

Data collection

Nonius KappaCCD diffractometer
 Absorption correction: gaussian
 (Coppens *et al.*, 1965)
T_{min} = 0.726, *T_{max}* = 0.943

17695 measured reflections
 5178 independent reflections
 4871 reflections with *I* > 2σ(*I*)
R_{int} = 0.049

Refinement

R[*F*² > 2σ(*F*²)] = 0.068
wR(*F*²) = 0.138
S = 1.25
 5178 reflections
 372 parameters

1 restraint
 H-atom parameters constrained
 $\Delta\rho_{\max}$ = 0.62 e Å⁻³
 $\Delta\rho_{\min}$ = -0.80 e Å⁻³

Table 1

Hydrogen-bond geometry (Å, °).

| <i>D</i> –H... <i>A</i> | <i>D</i> –H | H... <i>A</i> | <i>D</i> ... <i>A</i> | <i>D</i> –H... <i>A</i> |
|-----------------------------|-------------|---------------|-----------------------|-------------------------|
| C2–H2B...O4 ⁱ | 0.96 | 2.35 | 3.284 (13) | 166 |
| C16–H16...O3 ⁱⁱ | 0.93 | 2.60 | 3.2203 (10) | 125 |
| C19–H19...O1 ⁱⁱⁱ | 0.93 | 2.47 | 3.296 (7) | 148 |
| C28–H28...S4 ⁱⁱ | 0.93 | 2.69 | 3.345 (5) | 128 |

Symmetry codes: (i) *x* + ½, *y* – ½, *z*; (ii) *x*, –*y* + 1, *z* + ½; (iii) *x*, –*y*, *z* + ½.

Data collection: *COLLECT* (Nonius, 2000); cell refinement: *DENZO* and *SCALEPACK* (Otwinowski & Minor, 1997); data reduction: *DENZO* and *SCALEPACK*; program(s) used to solve structure: *SHELXS97* (Sheldrick, 2008); program(s) used to refine structure: *SHELXL97* (Sheldrick, 2008); molecular graphics: *ORTEP-3 for Windows* (Farrugia, 1997) and *Mercury* (Macrae *et al.*, 2006); software used to prepare material for publication: *WinGX* (Farrugia, 1999).

The authors are grateful to FAPEMIG and CNPq for financial support.

Supplementary data and figures for this paper are available from the IUCr electronic archives (Reference: BG2277).

References

- Alves, L. C., Rubinger, M. M. M., Lindemann, R. H., Perpétuo, G. J., Janczak, J., Miranda, L. D. L., Zambolim, L. & Oliveira, M. R. L. (2009). *J. Inorg. Biochem.* **103**, 1045–1053.
 Amim, R. S., Oliveira, M. R. L., Perpétuo, G. J., Janczak, J., Miranda, L. D. L. & Rubinger, M. M. M. (2008). *Polyhedron*, **27**, 1891–1897.
 Barone, G., Chaplin, T., Hibbert, T. G., Kana, A. T., Mahon, M. F., Molloy, K. C., Worsley Ian, D., Parkin, I. P. & Price, L. S. (2002). *J. Chem. Soc. Dalton Trans.* pp. 1085–1092.
 Coppens, P., Leiserowitz, L. & Rabinovich, D. (1965). *Acta Cryst.* **18**, 1035–1038.
 Coucouvanis, D. (1979). *Prog. Inorg. Chem.* **22**, 301–469.
 Farrugia, L. J. (1997). *J. Appl. Cryst.* **30**, 565.
 Farrugia, L. J. (1999). *J. Appl. Cryst.* **32**, 837–838.
 Franca, E. F., Oliveira, M. R. L., Guillard, S., Andrade, R. P., Lindemann, R. H., Amim, A. Jr, Ellena, J., De Bellis, V. M. & Rubinger, M. M. M. (2006). *Polyhedron*, **25**, 2119–2126.

- Hartke, K. (1966). *Arch. Pharm.* **299**, 174–178.
- Heard, P. J. (2005). *Prog. Inorg. Chem.* **53**, 1–69.
- Macrae, C. F., Edgington, P. R., McCabe, P., Pidcock, E., Shields, G. P., Taylor, R., Towler, M. & van de Streek, J. (2006). *J. Appl. Cryst.* **39**, 453–457.
- Menezes, D. C., Vieira, F. T., de Lima, G. M., Porto, A. O., Cortés, M. E., Ardisson, J. D. & Albrecht-Schmitt, T. E. (2005). *Eur. J. Med. Chem.* **40**, 1277–1282.
- Nonius (2000). *COLLECT*. Nonius BV, Delft, The Netherlands.
- Otwinowski, Z. & Minor, W. (1997). *Methods in Enzymology*, Vol. 276, *Macromolecular Crystallography*, Part A, edited by C. W. Carter Jr & R. M. Sweet, pp. 307–326. New York: Academic Press.
- Seth, N., Gupta, V. D., Nöth, H. & Thomann, M. (1992). *Chem. Ber.* **125**, 1523–1528.
- Sheldrick, G. M. (2008). *Acta Cryst.* **A64**, 112–122.

supplementary materials

Acta Cryst. (2009). E65, m1154-m1155 [doi:10.1107/S1600536809034114]

Bis(tetraphenylphosphonium) tris[*N*-(methylsulfonyl)dithiocarbimato(2-)- κ^2 S,S']stannate(IV)

J. P. Barolli, M. R. L. Oliveira, R. S. Corrêa and J. Ellena

Comment

We became interested in the syntheses and characterization of tin(IV) dithiocarbamate complexes due to their similarity with the dithiocarbamate analogues, which have shown antifungal activity (Menezes *et al.*, 2005). Tin dithiocarbamates have also been used as molecular tin sulfide precursors for semiconductor films (Barone *et al.*, 2002). To the best of our knowledge, the title compound is the first member of a class of Sn complexes with general formula $[\text{Sn}(\text{RSO}_2\text{N}=\text{CS}_2)_3]^{2-}$. This class is related to tin(IV) dithiocarbamates (Coucouvanis, 1979; Heard, 2005 and Seth *et al.*, 1992). However, differently from the dithiocarbamates, these are anionic species. Some crystallographic structures of transition metal (Ni, Pt and Zn) complexes with dithiocarbimato derived from sulfonamides are described in the literature (Alves *et al.*, 2009; Amim *et al.*, 2008 and Franca *et al.*; 2006).

The title compound, which is quite stable under ambient conditions, comprises a complex dianion and two tetraphenylphosphonium cations, with the formula $(\text{Ph}_4\text{P})_2[\text{Sn}(\text{CH}_3\text{SO}_2\text{N}=\text{CS}_2)_3]$ (scheme). To the best of our knowledge the tris(methyldithiocarbimato)estannate(IV) anion is the first example of tin complexes with dithiocarbamate ligands derived from sulfonamides. So, in this paper we report the crystal structure of the title compound. The complex presents an octahedral environment around the Sn^{IV} atom with the ligands coordinating in a relatively distorted manner (Figure 1). The Sn—S bond lengths lie within the range 2.443 (3)–2.646 (2) Å. In the chelate rings the C—S fragments present bond lengths which are characteristic of a single bond [1.75 (1)–1.77 (1) Å]. These values are in agreement with related structures (Menezes *et al.*, 2005). One of the ligands appears disordered into two sites (around the twofold symmetry axis) with occupancy factor 0.5. Weak intermolecular C—H \cdots O and C—H \cdots S interactions contribute to packing stabilization (Table 1). Figure 2 shows a crystal packing view of the complex projected onto the *bc* plane, where two independent sheets are clearly visible: one of them formed by the complex (green in Figure 2) and another defined by phosphonium units (blue in Figure 2). Both sheets are linked by weak hydrogen bonds (Table 1).

Experimental

The potassium methylsulfonyldithiocarbimato dihydrate was prepared from methanesulfonamide as described in the literature (Hartke, 1966). The compound (**1**) was prepared in DMF (10 ml). Tin(IV) iodide (0.7 mmol) was added to a suspension of the potassium methylsulfonyldithiocarbimato dihydrate (2.1 mmol). The mixture was stirred for 1.5 h at room temperature and filtered. Water (15 ml) and tetraphenylphosphonium bromide (1.4 mmol) were added to the solution obtained. The mixture was stirred for 15 min and the solid product obtained was filtered, washed with distilled water and dried under reduced pressure for 1 day, yielding $(\text{Ph}_4\text{P})_2[\text{Sn}(\text{CH}_3\text{SO}_2\text{N}=\text{CS}_2)_3]$ (ca 70%). Suitable crystals of (**1**) were obtained by slow evaporation of the solution of the compound in methanol/water (1:1 v/v); m. pt 420.6–422.0 K. Analysis found: C 49.69, H 3.91, N 3.04%; $\text{C}_{54}\text{H}_{49}\text{N}_3\text{O}_6\text{P}_2\text{S}_9\text{Sn}$ requires: C 49.69, H 3.78, N 3.22%. IR (most important bands, cm^{-1}): 1437 $\nu(\text{C}=\text{N})$; 1291 $\nu_{\text{ass}}(\text{SO}_2)$; 1127 $\nu_{\text{sim}}(\text{SO}_2)$; 938 $\nu_{\text{ass}}(\text{CS}_2)$ and 317 $\nu(\text{SnS})$.

Refinement

Refinement in *Cc* proved that the disorder around the two fold axis was not an artifact, thus confirming the correct space group as *C2/c*. Similarity restraints were applied to the disordered ligand in order to ensure a reasonable geometry. H atoms were positioned geometrically and refined as riding. $C_{\text{aryl}}\text{---H} = 0.93 \text{ \AA}$, $C_{\text{methyl}}\text{---H} = 0.96 \text{ \AA}$. $U_{\text{iso}}(\text{H}) = 1.2U_{\text{eq}}(\text{C}_{\text{aryl}})$ or $U_{\text{iso}}(\text{H}) = 1.5U_{\text{eq}}(\text{C}_{\text{methyl}})$.

Figures

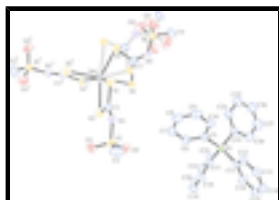


Fig. 1. Structure of the complex showing atom labels, with ellipsoids drawn at the 30% probability level. One of the two moieties in the disordered ligand is presented in open bonds. For clarity, H atoms have been omitted. [Symmetry code: $i = -x, y, 1/2 - z$].

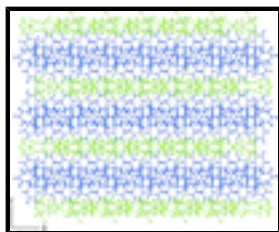


Fig. 2. Crystal packing of the title compound forming two independent sheets. The complex are displayed in green and the phosphonium in blue.

Bis(tetraphenylphosphonium) tris[*N*-(methylsulfonyl)dithiocarbimato(2-)- κ^2S,S']stannate(IV)

Crystal data

$(C_{24}H_{20}P)_2[Sn(C_2H_3NO_2S_3)_3]$

$M_r = 1305.13$

Monoclinic, *C2/c*

Hall symbol: $-C\ 2yc$

$a = 18.5563 (3) \text{ \AA}$

$b = 13.6096 (2) \text{ \AA}$

$c = 23.3203 (3) \text{ \AA}$

$\beta = 91.355 (1)^\circ$

$V = 5887.75 (15) \text{ \AA}^3$

$Z = 4$

$F_{000} = 2664$

$D_x = 1.472 \text{ Mg m}^{-3}$

Mo $K\alpha$ radiation, $\lambda = 0.71073 \text{ \AA}$

Cell parameters from 37024 reflections

$\theta = 2.9\text{--}26.4^\circ$

$\mu = 0.86 \text{ mm}^{-1}$

$T = 298 \text{ K}$

Prism, colourless

$0.40 \times 0.11 \times 0.07 \text{ mm}$

Data collection

Nonius KappaCCD
diffractometer

$T = 298 \text{ K}$

CCD rotation images, thick slices scans

Absorption correction: Gaussian
(Coppens *et al.*, 1965)

4871 reflections with $I > 2\sigma(I)$

$R_{\text{int}} = 0.049$

$\theta_{\text{max}} = 25.0^\circ$

$\theta_{\text{min}} = 3.2^\circ$

$T_{\min} = 0.726$, $T_{\max} = 0.943$
 17695 measured reflections
 5178 independent reflections

$h = -22 \rightarrow 22$
 $k = -16 \rightarrow 15$
 $l = -27 \rightarrow 27$

Refinement

Refinement on F^2
 Least-squares matrix: full

$R[F^2 > 2\sigma(F^2)] = 0.068$

$wR(F^2) = 0.138$

$S = 1.25$

5178 reflections

372 parameters

1 restraint

H-atom parameters constrained

$$w = 1/[\sigma^2(F_o^2) + (0.0524P)^2 + 7.2513P]$$

where $P = (F_o^2 + 2F_c^2)/3$

$(\Delta/\sigma)_{\max} < 0.001$

$\Delta\rho_{\max} = 0.62 \text{ e } \text{\AA}^{-3}$

$\Delta\rho_{\min} = -0.80 \text{ e } \text{\AA}^{-3}$

Extinction correction: none

Special details

Geometry. All e.s.d.'s (except the e.s.d. in the dihedral angle between two l.s. planes) are estimated using the full covariance matrix. The cell e.s.d.'s are taken into account individually in the estimation of e.s.d.'s in distances, angles and torsion angles; correlations between e.s.d.'s in cell parameters are only used when they are defined by crystal symmetry. An approximate (isotropic) treatment of cell e.s.d.'s is used for estimating e.s.d.'s involving l.s. planes.

Fractional atomic coordinates and isotropic or equivalent isotropic displacement parameters (\AA^2)

| | x | y | z | $U_{\text{iso}}^*/U_{\text{eq}}$ | Occ. (<1) |
|-----|-------------|-------------|--------------|----------------------------------|-----------|
| C1 | 0.1377 (2) | 0.3823 (4) | 0.23827 (19) | 0.0512 (11) | |
| C2 | 0.3047 (4) | 0.2250 (6) | 0.2112 (3) | 0.097 (2) | |
| H2A | 0.2987 | 0.1898 | 0.2464 | 0.146* | |
| H2B | 0.3355 | 0.2807 | 0.218 | 0.146* | |
| H2C | 0.3261 | 0.1825 | 0.1835 | 0.146* | |
| C3 | 0.0123 (6) | 0.7091 (10) | 0.2265 (5) | 0.054 (3) | 0.5 |
| C4 | 0.0208 (8) | 0.9908 (8) | 0.2192 (6) | 0.084 (4) | 0.5 |
| H4A | 0 | 1.0435 | 0.25 | 0.126* | |
| H4B | 0.0692 | 0.9963 | 0.2088 | 0.126* | 0.5 |
| H4C | -0.01 | 0.9968 | 0.1853 | 0.126* | 0.5 |
| C5 | 0.1135 (3) | 0.1693 (4) | 0.42704 (19) | 0.0513 (11) | |
| C6 | 0.1645 (3) | 0.0950 (4) | 0.4278 (2) | 0.0630 (13) | |
| H6 | 0.1825 | 0.071 | 0.4626 | 0.076* | |
| C7 | 0.1888 (4) | 0.0563 (4) | 0.3767 (3) | 0.0807 (17) | |
| H7 | 0.2227 | 0.006 | 0.3773 | 0.097* | |
| C8 | 0.1626 (4) | 0.0925 (5) | 0.3254 (3) | 0.0826 (19) | |
| H8 | 0.1788 | 0.0661 | 0.2912 | 0.099* | |
| C9 | 0.1128 (3) | 0.1669 (5) | 0.3238 (2) | 0.0737 (16) | |
| H9 | 0.0957 | 0.1912 | 0.2888 | 0.088* | |
| C10 | 0.0883 (3) | 0.2056 (4) | 0.3743 (2) | 0.0602 (13) | |
| H10 | 0.0546 | 0.2563 | 0.3733 | 0.072* | |
| C11 | -0.0120 (2) | 0.1986 (3) | 0.50305 (17) | 0.0482 (11) | |

supplementary materials

| | | | | | |
|-----|--------------|--------------|--------------|-------------|-----|
| C12 | -0.0622 (3) | 0.1985 (4) | 0.45823 (19) | 0.0546 (12) | |
| H12 | -0.0472 | 0.207 | 0.4208 | 0.065* | |
| C13 | -0.1347 (3) | 0.1858 (4) | 0.4689 (2) | 0.0617 (13) | |
| H13 | -0.1682 | 0.1852 | 0.4386 | 0.074* | |
| C14 | -0.1570 (3) | 0.1742 (4) | 0.5237 (2) | 0.0656 (14) | |
| H14 | -0.2057 | 0.1654 | 0.5307 | 0.079* | |
| C15 | -0.1080 (3) | 0.1753 (4) | 0.5685 (2) | 0.0715 (15) | |
| H15 | -0.1237 | 0.1677 | 0.6058 | 0.086* | |
| C16 | -0.0362 (3) | 0.1877 (4) | 0.5588 (2) | 0.0654 (14) | |
| H16 | -0.0034 | 0.1887 | 0.5896 | 0.079* | |
| C17 | 0.1296 (2) | 0.1673 (4) | 0.55250 (18) | 0.0492 (11) | |
| C18 | 0.1161 (3) | 0.0707 (4) | 0.5669 (2) | 0.0622 (13) | |
| H18 | 0.0847 | 0.0335 | 0.5441 | 0.075* | |
| C19 | 0.1486 (3) | 0.0285 (4) | 0.6148 (2) | 0.0689 (14) | |
| H19 | 0.1392 | -0.0366 | 0.6243 | 0.083* | |
| C20 | 0.1953 (3) | 0.0845 (5) | 0.6485 (2) | 0.0722 (16) | |
| H20 | 0.2174 | 0.0568 | 0.6809 | 0.087* | |
| C21 | 0.2091 (3) | 0.1798 (5) | 0.6346 (2) | 0.0731 (17) | |
| H21 | 0.2405 | 0.2167 | 0.6577 | 0.088* | |
| C22 | 0.1768 (3) | 0.2223 (4) | 0.5866 (2) | 0.0622 (13) | |
| H22 | 0.1868 | 0.2873 | 0.5772 | 0.075* | |
| C23 | 0.0993 (3) | 0.3510 (4) | 0.4934 (2) | 0.0541 (12) | |
| C24 | 0.1468 (3) | 0.3929 (4) | 0.4560 (3) | 0.0711 (15) | |
| H24 | 0.1673 | 0.355 | 0.4275 | 0.085* | |
| C25 | 0.1640 (4) | 0.4919 (4) | 0.4611 (3) | 0.092 (2) | |
| H25 | 0.1957 | 0.5206 | 0.4356 | 0.11* | |
| C26 | 0.1348 (4) | 0.5465 (5) | 0.5030 (4) | 0.102 (2) | |
| H26 | 0.1471 | 0.6125 | 0.5067 | 0.122* | |
| C27 | 0.0883 (5) | 0.5062 (5) | 0.5395 (4) | 0.114 (3) | |
| H27 | 0.0688 | 0.5445 | 0.5683 | 0.137* | |
| C28 | 0.0690 (4) | 0.4077 (5) | 0.5346 (3) | 0.093 (2) | |
| H28 | 0.0356 | 0.3808 | 0.5592 | 0.111* | |
| N1 | 0.1997 (2) | 0.3395 (3) | 0.23680 (16) | 0.0549 (10) | |
| N3 | 0.0164 (4) | 0.8014 (7) | 0.2123 (3) | 0.059 (2) | 0.5 |
| O1 | 0.1729 (2) | 0.1825 (3) | 0.18192 (17) | 0.0874 (13) | |
| O2 | 0.2311 (2) | 0.3177 (3) | 0.13255 (15) | 0.0814 (12) | |
| O3 | -0.0270 (8) | 0.8837 (7) | 0.1904 (4) | 0.134 (5) | 0.5 |
| O4 | -0.0792 (5) | 0.8933 (8) | 0.2542 (6) | 0.132 (4) | 0.5 |
| P1 | 0.08248 (6) | 0.22110 (9) | 0.49273 (5) | 0.0472 (3) | |
| S1 | 0.12124 (7) | 0.45967 (11) | 0.29633 (6) | 0.0639 (4) | |
| S2 | 0.06587 (7) | 0.37025 (12) | 0.18873 (5) | 0.0676 (4) | |
| S3 | 0.22079 (7) | 0.26505 (11) | 0.18510 (5) | 0.0629 (4) | |
| S5 | 0.01886 (19) | 0.6562 (3) | 0.21037 (15) | 0.0599 (8) | 0.5 |
| S4 | 0.04165 (16) | 0.6248 (2) | 0.17458 (13) | 0.0629 (7) | 0.5 |
| S6 | 0 | 0.88818 (17) | 0.25 | 0.0880 (7) | |
| Sn1 | 0 | 0.49240 (4) | 0.25 | 0.0642 (2) | |

Atomic displacement parameters (\AA^2)

| | U^{11} | U^{22} | U^{33} | U^{12} | U^{13} | U^{23} |
|-----|-------------|-------------|-------------|--------------|--------------|--------------|
| C1 | 0.053 (3) | 0.053 (3) | 0.047 (2) | -0.009 (2) | -0.010 (2) | 0.005 (2) |
| C2 | 0.091 (4) | 0.108 (5) | 0.092 (5) | 0.040 (4) | -0.011 (4) | -0.022 (4) |
| C3 | 0.041 (6) | 0.061 (9) | 0.060 (7) | -0.007 (6) | 0.001 (5) | 0.002 (6) |
| C4 | 0.109 (10) | 0.043 (7) | 0.099 (9) | 0.013 (6) | 0.004 (7) | 0.007 (6) |
| C5 | 0.059 (3) | 0.047 (3) | 0.047 (3) | -0.009 (2) | 0.002 (2) | -0.002 (2) |
| C6 | 0.075 (3) | 0.056 (3) | 0.059 (3) | 0.008 (3) | 0.009 (2) | -0.001 (2) |
| C7 | 0.103 (5) | 0.056 (4) | 0.085 (4) | 0.004 (3) | 0.028 (4) | -0.012 (3) |
| C8 | 0.115 (5) | 0.071 (4) | 0.062 (4) | -0.029 (4) | 0.026 (3) | -0.023 (3) |
| C9 | 0.095 (4) | 0.076 (4) | 0.050 (3) | -0.026 (4) | 0.002 (3) | -0.003 (3) |
| C10 | 0.071 (3) | 0.061 (3) | 0.048 (3) | -0.009 (3) | 0.002 (2) | -0.001 (2) |
| C11 | 0.056 (3) | 0.047 (3) | 0.041 (2) | -0.003 (2) | -0.003 (2) | -0.0003 (19) |
| C12 | 0.064 (3) | 0.057 (3) | 0.042 (2) | 0.001 (2) | -0.008 (2) | 0.000 (2) |
| C13 | 0.057 (3) | 0.063 (3) | 0.064 (3) | 0.001 (2) | -0.017 (2) | -0.001 (3) |
| C14 | 0.051 (3) | 0.066 (4) | 0.080 (4) | -0.004 (3) | 0.001 (3) | 0.007 (3) |
| C15 | 0.064 (3) | 0.090 (4) | 0.061 (3) | -0.003 (3) | 0.006 (3) | 0.012 (3) |
| C16 | 0.057 (3) | 0.089 (4) | 0.049 (3) | -0.005 (3) | -0.008 (2) | 0.006 (3) |
| C17 | 0.047 (2) | 0.059 (3) | 0.041 (2) | 0.000 (2) | -0.0049 (19) | -0.004 (2) |
| C18 | 0.070 (3) | 0.060 (4) | 0.055 (3) | 0.002 (3) | -0.015 (2) | -0.003 (2) |
| C19 | 0.075 (4) | 0.070 (4) | 0.061 (3) | 0.013 (3) | -0.009 (3) | 0.009 (3) |
| C20 | 0.058 (3) | 0.106 (5) | 0.051 (3) | 0.019 (3) | -0.010 (2) | 0.005 (3) |
| C21 | 0.055 (3) | 0.115 (6) | 0.049 (3) | -0.008 (3) | -0.011 (2) | -0.007 (3) |
| C22 | 0.058 (3) | 0.077 (4) | 0.051 (3) | -0.008 (3) | -0.003 (2) | -0.002 (3) |
| C23 | 0.060 (3) | 0.045 (3) | 0.057 (3) | -0.002 (2) | 0.002 (2) | -0.009 (2) |
| C24 | 0.075 (4) | 0.051 (3) | 0.087 (4) | -0.004 (3) | 0.014 (3) | -0.009 (3) |
| C25 | 0.096 (5) | 0.056 (4) | 0.125 (6) | -0.016 (3) | 0.028 (4) | -0.008 (4) |
| C26 | 0.108 (5) | 0.054 (4) | 0.143 (7) | -0.012 (4) | 0.016 (5) | -0.017 (4) |
| C27 | 0.154 (7) | 0.066 (5) | 0.126 (6) | -0.003 (5) | 0.041 (6) | -0.044 (4) |
| C28 | 0.119 (5) | 0.067 (4) | 0.094 (4) | -0.008 (4) | 0.042 (4) | -0.026 (4) |
| N1 | 0.052 (2) | 0.060 (3) | 0.052 (2) | 0.001 (2) | -0.0102 (17) | -0.0085 (19) |
| N3 | 0.066 (5) | 0.058 (6) | 0.054 (5) | 0.002 (4) | 0.007 (4) | -0.012 (4) |
| O1 | 0.110 (3) | 0.079 (3) | 0.074 (3) | -0.031 (2) | 0.014 (2) | -0.023 (2) |
| O2 | 0.080 (3) | 0.110 (3) | 0.055 (2) | -0.010 (2) | 0.0100 (18) | 0.006 (2) |
| O3 | 0.270 (15) | 0.073 (6) | 0.058 (5) | -0.038 (8) | -0.046 (7) | 0.013 (4) |
| O4 | 0.095 (7) | 0.110 (8) | 0.193 (12) | -0.006 (6) | 0.054 (7) | -0.038 (8) |
| P1 | 0.0522 (7) | 0.0475 (7) | 0.0416 (6) | -0.0017 (5) | -0.0034 (5) | -0.0020 (5) |
| S1 | 0.0551 (7) | 0.0641 (9) | 0.0713 (8) | 0.0058 (6) | -0.0250 (6) | -0.0177 (7) |
| S2 | 0.0568 (7) | 0.0928 (11) | 0.0523 (7) | -0.0070 (7) | -0.0166 (6) | -0.0055 (7) |
| S3 | 0.0668 (8) | 0.0698 (9) | 0.0521 (7) | -0.0048 (7) | -0.0010 (6) | -0.0083 (6) |
| S5 | 0.0665 (19) | 0.060 (2) | 0.053 (2) | -0.0027 (18) | 0.0020 (15) | 0.0058 (16) |
| S4 | 0.0832 (19) | 0.0563 (17) | 0.0500 (15) | -0.0006 (14) | 0.0157 (14) | -0.0023 (13) |
| S6 | 0.112 (2) | 0.0629 (14) | 0.0878 (16) | 0 | -0.0187 (13) | 0 |
| Sn1 | 0.0555 (3) | 0.0525 (4) | 0.0834 (4) | 0 | -0.0268 (3) | 0 |

supplementary materials

Geometric parameters (Å, °)

| | | | |
|--------------------|------------|---------------------|-------------|
| C1—N1 | 1.290 (6) | C17—P1 | 1.785 (4) |
| C1—S1 | 1.748 (5) | C18—C19 | 1.381 (7) |
| C1—S2 | 1.751 (4) | C18—H18 | 0.93 |
| C2—S3 | 1.746 (6) | C19—C20 | 1.385 (8) |
| C2—H2A | 0.96 | C19—H19 | 0.93 |
| C2—H2B | 0.96 | C20—C21 | 1.363 (8) |
| C2—H2C | 0.96 | C20—H20 | 0.93 |
| C3—S5 | 0.822 (12) | C21—C22 | 1.385 (7) |
| C3—N3 | 1.302 (15) | C21—H21 | 0.93 |
| C3—S5 ⁱ | 1.750 (12) | C22—H22 | 0.93 |
| C3—S4 | 1.763 (14) | C23—C28 | 1.364 (7) |
| C4—S6 | 1.621 (11) | C23—C24 | 1.378 (7) |
| C4—O4 ⁱ | 1.813 (16) | C23—P1 | 1.795 (5) |
| C4—O3 | 1.826 (16) | C24—C25 | 1.389 (8) |
| C4—H4A | 1.0919 | C24—H24 | 0.93 |
| C4—H4B | 0.9393 | C25—C26 | 1.352 (9) |
| C4—H4C | 0.9675 | C25—H25 | 0.93 |
| C5—C6 | 1.383 (7) | C26—C27 | 1.343 (10) |
| C5—C10 | 1.396 (7) | C26—H26 | 0.93 |
| C5—P1 | 1.794 (5) | C27—C28 | 1.391 (9) |
| C6—C7 | 1.387 (7) | C27—H27 | 0.93 |
| C6—H6 | 0.93 | C28—H28 | 0.93 |
| C7—C8 | 1.373 (9) | N1—S3 | 1.630 (4) |
| C7—H7 | 0.93 | N3—S6 | 1.508 (8) |
| C8—C9 | 1.370 (9) | N3—S5 | 1.977 (9) |
| C8—H8 | 0.93 | O1—S3 | 1.433 (4) |
| C9—C10 | 1.378 (7) | O2—S3 | 1.436 (4) |
| C9—H9 | 0.93 | O3—S6 | 1.469 (8) |
| C10—H10 | 0.93 | O4—S6 | 1.477 (9) |
| C11—C12 | 1.383 (6) | S1—Sn1 | 2.5125 (12) |
| C11—C16 | 1.394 (6) | S2—Sn1 | 2.5262 (15) |
| C11—P1 | 1.802 (5) | S5—C3 ⁱ | 1.750 (12) |
| C12—C13 | 1.384 (7) | S5—Sn1 | 2.441 (4) |
| C12—H12 | 0.93 | S4—Sn1 | 2.646 (3) |
| C13—C14 | 1.361 (7) | S6—O3 ⁱ | 1.469 (8) |
| C13—H13 | 0.93 | S6—O4 ⁱ | 1.477 (9) |
| C14—C15 | 1.369 (7) | S6—N3 ⁱ | 1.508 (8) |
| C14—H14 | 0.93 | S6—C4 ⁱ | 1.621 (11) |
| C15—C16 | 1.367 (7) | Sn1—S5 ⁱ | 2.441 (4) |
| C15—H15 | 0.93 | Sn1—S1 ⁱ | 2.5125 (12) |
| C16—H16 | 0.93 | Sn1—S2 ⁱ | 2.5262 (15) |
| C17—C18 | 1.382 (7) | Sn1—S4 ⁱ | 2.646 (3) |
| C17—C22 | 1.388 (7) | | |
| N1—C1—S1 | 117.7 (3) | C26—C25—C24 | 120.0 (6) |

| | | | |
|-------------------------|------------|-------------------------|------------|
| N1—C1—S2 | 127.2 (4) | C26—C25—H25 | 120 |
| S1—C1—S2 | 115.1 (3) | C24—C25—H25 | 120 |
| S3—C2—H2A | 109.5 | C27—C26—C25 | 120.5 (6) |
| S3—C2—H2B | 109.5 | C27—C26—H26 | 119.7 |
| H2A—C2—H2B | 109.5 | C25—C26—H26 | 119.7 |
| S3—C2—H2C | 109.5 | C26—C27—C28 | 120.7 (6) |
| H2A—C2—H2C | 109.5 | C26—C27—H27 | 119.7 |
| H2B—C2—H2C | 109.5 | C28—C27—H27 | 119.7 |
| S5—C3—N3 | 136.0 (15) | C23—C28—C27 | 119.5 (6) |
| S5—C3—S5 ⁱ | 94.5 (11) | C23—C28—H28 | 120.2 |
| N3—C3—S5 ⁱ | 129.3 (10) | C27—C28—H28 | 120.2 |
| N3—C3—S4 | 115.7 (9) | C1—N1—S3 | 122.0 (3) |
| S5 ⁱ —C3—S4 | 115.0 (7) | C3—N3—O3 | 142.3 (10) |
| S6—C4—H4A | 100.5 | C3—N3—S6 | 126.4 (9) |
| O4 ⁱ —C4—H4A | 118.3 | O3—N3—S5 | 140.2 (7) |
| O3—C4—H4A | 126.2 | S6—N3—S5 | 143.2 (6) |
| S6—C4—H4B | 115 | N3—O3—O4 | 94.0 (7) |
| C4 ⁱ —C4—H4B | 134.1 | N3—O3—C4 | 102.9 (8) |
| O3—C4—H4B | 115.4 | C17—P1—C5 | 110.1 (2) |
| H4A—C4—H4B | 118.2 | C17—P1—C23 | 108.4 (2) |
| S6—C4—H4C | 107 | C5—P1—C23 | 109.6 (2) |
| C4 ⁱ —C4—H4C | 115.6 | C17—P1—C11 | 106.7 (2) |
| O4 ⁱ —C4—H4C | 132.7 | C5—P1—C11 | 112.4 (2) |
| H4A—C4—H4C | 105.7 | C23—P1—C11 | 109.6 (2) |
| H4B—C4—H4C | 109.4 | C1—S1—Sn1 | 86.82 (15) |
| C6—C5—C10 | 119.0 (4) | C1—S2—Sn1 | 86.33 (17) |
| C6—C5—P1 | 120.7 (4) | O1—S3—O2 | 116.2 (2) |
| C10—C5—P1 | 120.3 (4) | O1—S3—N1 | 111.5 (2) |
| C5—C6—C7 | 120.2 (5) | O2—S3—N1 | 111.1 (2) |
| C5—C6—H6 | 119.9 | O1—S3—C2 | 108.7 (3) |
| C7—C6—H6 | 119.9 | O2—S3—C2 | 108.5 (3) |
| C8—C7—C6 | 119.8 (6) | N1—S3—C2 | 99.5 (3) |
| C8—C7—H7 | 120.1 | C3—S5—S4 | 142.7 (11) |
| C6—C7—H7 | 120.1 | S4—S5—C3 ⁱ | 175.2 (4) |
| C9—C8—C7 | 120.8 (5) | S4—S5—N3 | 116.1 (3) |
| C9—C8—H8 | 119.6 | C3 ⁱ —S5—N3 | 64.0 (4) |
| C7—C8—H8 | 119.6 | C3—S5—Sn1 | 127.1 (10) |
| C8—C9—C10 | 119.8 (5) | S4—S5—Sn1 | 89.6 (3) |
| C8—C9—H9 | 120.1 | C3 ⁱ —S5—Sn1 | 90.2 (5) |
| C10—C9—H9 | 120.1 | N3—S5—Sn1 | 154.2 (3) |
| C9—C10—C5 | 120.4 (5) | S5—S4—Sn1 | 67.3 (3) |
| C9—C10—H10 | 119.8 | C3—S4—Sn1 | 83.5 (4) |
| C5—C10—H10 | 119.8 | O3 ⁱ —S6—O3 | 175.2 (8) |
| C12—C11—C16 | 118.7 (4) | O3 ⁱ —S6—O4 | 104.9 (7) |
| C12—C11—P1 | 122.6 (3) | O3—S6—O4 | 75.4 (7) |
| C16—C11—P1 | 118.6 (3) | O4 ⁱ —S6—O4 | 174.6 (9) |

supplementary materials

| | | | |
|--------------|------------|--------------------------------------|-------------|
| C11—C12—C13 | 120.2 (4) | O3—S6—N3 ⁱ | 116.8 (5) |
| C11—C12—H12 | 119.9 | O4 ⁱ —S6—N3 ⁱ | 106.9 (5) |
| C13—C12—H12 | 119.9 | O4—S6—N3 ⁱ | 77.4 (6) |
| C14—C13—C12 | 120.1 (5) | O3 ⁱ —S6—N3 | 116.8 (5) |
| C14—C13—H13 | 119.9 | O3—S6—N3 | 59.0 (5) |
| C12—C13—H13 | 119.9 | O4 ⁱ —S6—N3 | 77.4 (6) |
| C13—C14—C15 | 120.3 (5) | O4—S6—N3 | 106.9 (5) |
| C13—C14—H14 | 119.9 | N3 ⁱ —S6—N3 | 76.9 (7) |
| C15—C14—H14 | 119.9 | O3 ⁱ —S6—C4 ⁱ | 72.3 (6) |
| C16—C15—C14 | 120.5 (5) | O3—S6—C4 ⁱ | 112.1 (7) |
| C16—C15—H15 | 119.7 | O4 ⁱ —S6—C4 ⁱ | 103.7 (7) |
| C14—C15—H15 | 119.7 | O4—S6—C4 ⁱ | 71.5 (6) |
| C15—C16—C11 | 120.2 (5) | N3 ⁱ —S6—C4 ⁱ | 111.3 (6) |
| C15—C16—H16 | 119.9 | N3—S6—C4 ⁱ | 170.6 (6) |
| C11—C16—H16 | 119.9 | O3 ⁱ —S6—C4 | 112.1 (7) |
| C18—C17—C22 | 119.3 (4) | O3—S6—C4 | 72.3 (6) |
| C18—C17—P1 | 119.5 (3) | O4 ⁱ —S6—C4 | 71.5 (6) |
| C22—C17—P1 | 121.1 (4) | O4—S6—C4 | 103.7 (7) |
| C19—C18—C17 | 120.9 (5) | N3—S6—C4 | 111.3 (6) |
| C19—C18—H18 | 119.5 | S5 ⁱ —Sn1—S5 | 48.15 (19) |
| C17—C18—H18 | 119.5 | S5 ⁱ —Sn1—S1 | 97.70 (9) |
| C18—C19—C20 | 119.0 (6) | S5—Sn1—S1 | 100.94 (9) |
| C18—C19—H19 | 120.5 | S5—Sn1—S1 ⁱ | 97.70 (9) |
| C20—C19—H19 | 120.5 | S5 ⁱ —Sn1—S2 ⁱ | 108.13 (10) |
| C21—C20—C19 | 120.5 (5) | S5—Sn1—S2 ⁱ | 152.94 (10) |
| C21—C20—H20 | 119.7 | S1—Sn1—S2 ⁱ | 94.61 (5) |
| C19—C20—H20 | 119.7 | S1 ⁱ —Sn1—S2 ⁱ | 71.71 (4) |
| C20—C21—C22 | 120.7 (5) | S5 ⁱ —Sn1—S2 | 152.94 (10) |
| C20—C21—H21 | 119.7 | S5—Sn1—S2 | 108.13 (10) |
| C22—C21—H21 | 119.7 | S1—Sn1—S2 | 71.71 (4) |
| C21—C22—C17 | 119.5 (5) | S1 ⁱ —Sn1—S2 | 94.61 (5) |
| C21—C22—H22 | 120.2 | S5—Sn1—S4 ⁱ | 71.14 (14) |
| C17—C22—H22 | 120.2 | S1—Sn1—S4 ⁱ | 96.17 (7) |
| C28—C23—C24 | 119.5 (5) | S2 ⁱ —Sn1—S4 ⁱ | 85.36 (8) |
| C28—C23—P1 | 119.3 (4) | S2—Sn1—S4 ⁱ | 167.66 (7) |
| C24—C23—P1 | 121.0 (4) | S1—Sn1—S4 | 97.69 (8) |
| C23—C24—C25 | 119.8 (5) | S1 ⁱ —Sn1—S4 | 96.17 (7) |
| C23—C24—H24 | 120.1 | S2 ⁱ —Sn1—S4 | 167.66 (7) |
| C25—C24—H24 | 120.1 | S2—Sn1—S4 | 85.36 (8) |
| C10—C5—C6—C7 | -1.3 (8) | C3 ⁱ —C3—N3—S6 | 5.2 (18) |
| P1—C5—C6—C7 | -179.2 (4) | S5 ⁱ —C3—N3—S6 | 5.2 (15) |
| C5—C6—C7—C8 | 0.6 (9) | S4—C3—N3—S6 | -175.4 (6) |

| | | | |
|---------------------------|------------|---------------------------|------------|
| C6—C7—C8—C9 | 0.3 (9) | S4—C3—N3—N3 ⁱ | -177.0 (8) |
| C7—C8—C9—C10 | -0.5 (9) | C3 ⁱ —C3—N3—S5 | -173 (3) |
| C8—C9—C10—C5 | -0.2 (8) | S5 ⁱ —C3—N3—S5 | -173 (3) |
| C6—C5—C10—C9 | 1.1 (7) | S4—C3—N3—S5 | 6.0 (12) |
| P1—C5—C10—C9 | 179.1 (4) | C18—C17—P1—C5 | -70.6 (4) |
| C16—C11—C12—C13 | -1.2 (7) | C22—C17—P1—C5 | 112.8 (4) |
| P1—C11—C12—C13 | -176.7 (4) | C18—C17—P1—C23 | 169.5 (4) |
| C11—C12—C13—C14 | 0.5 (8) | C22—C17—P1—C23 | -7.1 (4) |
| C12—C13—C14—C15 | 0.2 (8) | C18—C17—P1—C11 | 51.6 (4) |
| C13—C14—C15—C16 | -0.3 (9) | C22—C17—P1—C11 | -125.0 (4) |
| C14—C15—C16—C11 | -0.4 (9) | C6—C5—P1—C17 | 2.9 (5) |
| C12—C11—C16—C15 | 1.1 (8) | C10—C5—P1—C17 | -175.1 (4) |
| P1—C11—C16—C15 | 176.8 (4) | C6—C5—P1—C23 | 122.0 (4) |
| C22—C17—C18—C19 | 0.3 (7) | C10—C5—P1—C23 | -55.9 (4) |
| P1—C17—C18—C19 | -176.3 (4) | C6—C5—P1—C11 | -115.9 (4) |
| C17—C18—C19—C20 | 0.0 (8) | C10—C5—P1—C11 | 66.2 (4) |
| C18—C19—C20—C21 | -0.1 (8) | C28—C23—P1—C17 | -71.1 (5) |
| C19—C20—C21—C22 | -0.2 (8) | C24—C23—P1—C17 | 103.7 (5) |
| C20—C21—C22—C17 | 0.5 (8) | C28—C23—P1—C5 | 168.7 (5) |
| C18—C17—C22—C21 | -0.5 (7) | C24—C23—P1—C5 | -16.5 (5) |
| P1—C17—C22—C21 | 176.1 (4) | C28—C23—P1—C11 | 45.0 (5) |
| C28—C23—C24—C25 | 0.9 (9) | C24—C23—P1—C11 | -140.3 (4) |
| P1—C23—C24—C25 | -173.9 (5) | C12—C11—P1—C17 | -157.2 (4) |
| C23—C24—C25—C26 | 0.7 (11) | C16—C11—P1—C17 | 27.3 (5) |
| C24—C25—C26—C27 | -1.0 (13) | C12—C11—P1—C5 | -36.4 (5) |
| C25—C26—C27—C28 | -0.3 (14) | C16—C11—P1—C5 | 148.1 (4) |
| C24—C23—C28—C27 | -2.2 (10) | C12—C11—P1—C23 | 85.7 (5) |
| P1—C23—C28—C27 | 172.7 (6) | C16—C11—P1—C23 | -89.8 (4) |
| C26—C27—C28—C23 | 2.0 (13) | N1—C1—S1—Sn1 | 178.7 (4) |
| S1—C1—N1—S3 | 179.5 (2) | S2—C1—S1—Sn1 | -2.4 (2) |
| S2—C1—N1—S3 | 0.7 (6) | N1—C1—S2—Sn1 | -178.8 (4) |
| S5—C3—N3—O3 | 94 (2) | S1—C1—S2—Sn1 | 2.4 (2) |
| C3 ⁱ —C3—N3—O3 | -80 (2) | C1—N1—S3—O1 | -60.3 (5) |
| S4—C3—N3—O3 | 99.6 (15) | C1—N1—S3—O2 | 71.0 (5) |
| S5—C3—N3—S6 | 178.6 (15) | C1—N1—S3—C2 | -174.8 (5) |

Symmetry codes: (i) $-x, y, -z+1/2$.

Hydrogen-bond geometry ($\text{\AA}, ^\circ$)

| <i>D</i> —H \cdots <i>A</i> | <i>D</i> —H | H \cdots <i>A</i> | <i>D</i> \cdots <i>A</i> | <i>D</i> —H \cdots <i>A</i> |
|------------------------------------|-------------|---------------------|----------------------------|-------------------------------|
| C2—H2B \cdots O4 ⁱⁱ | 0.96 | 2.35 | 3.284 (13) | 166 |
| C16—H16 \cdots O3 ⁱⁱⁱ | 0.93 | 2.60 | 3.2203 (10) | 125 |
| C19—H19 \cdots O1 ^{iv} | 0.93 | 2.47 | 3.296 (7) | 148 |
| C28—H28 \cdots S4 ⁱⁱⁱ | 0.93 | 2.69 | 3.345 (5) | 128 |

Symmetry codes: (ii) $x+1/2, y-1/2, z$; (iii) $x, -y+1, z+1/2$; (iv) $x, -y, z+1/2$.

Fig. 1

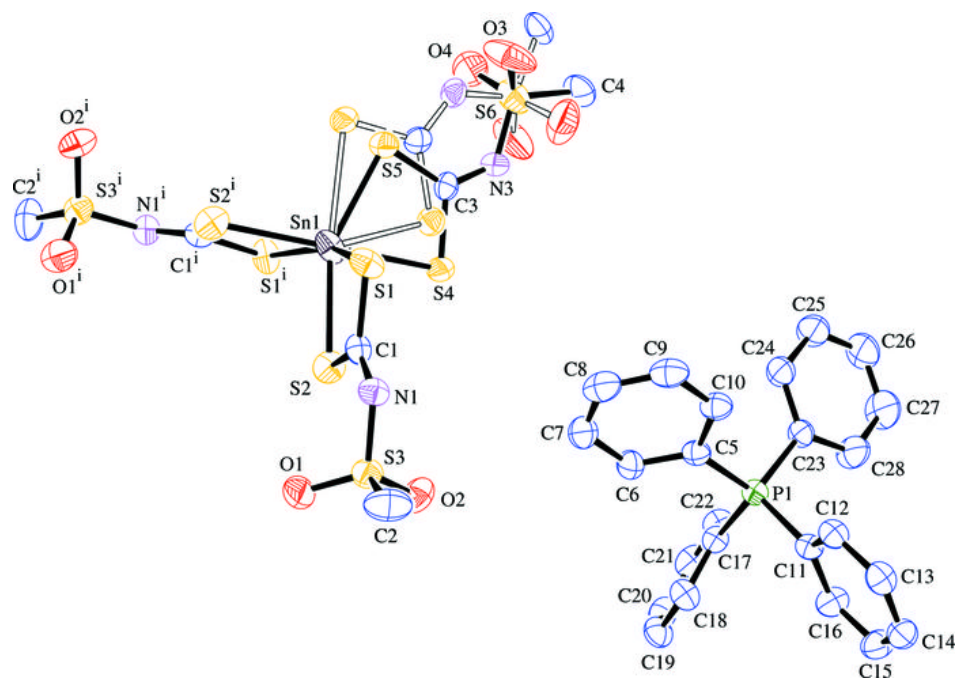


Fig. 2

